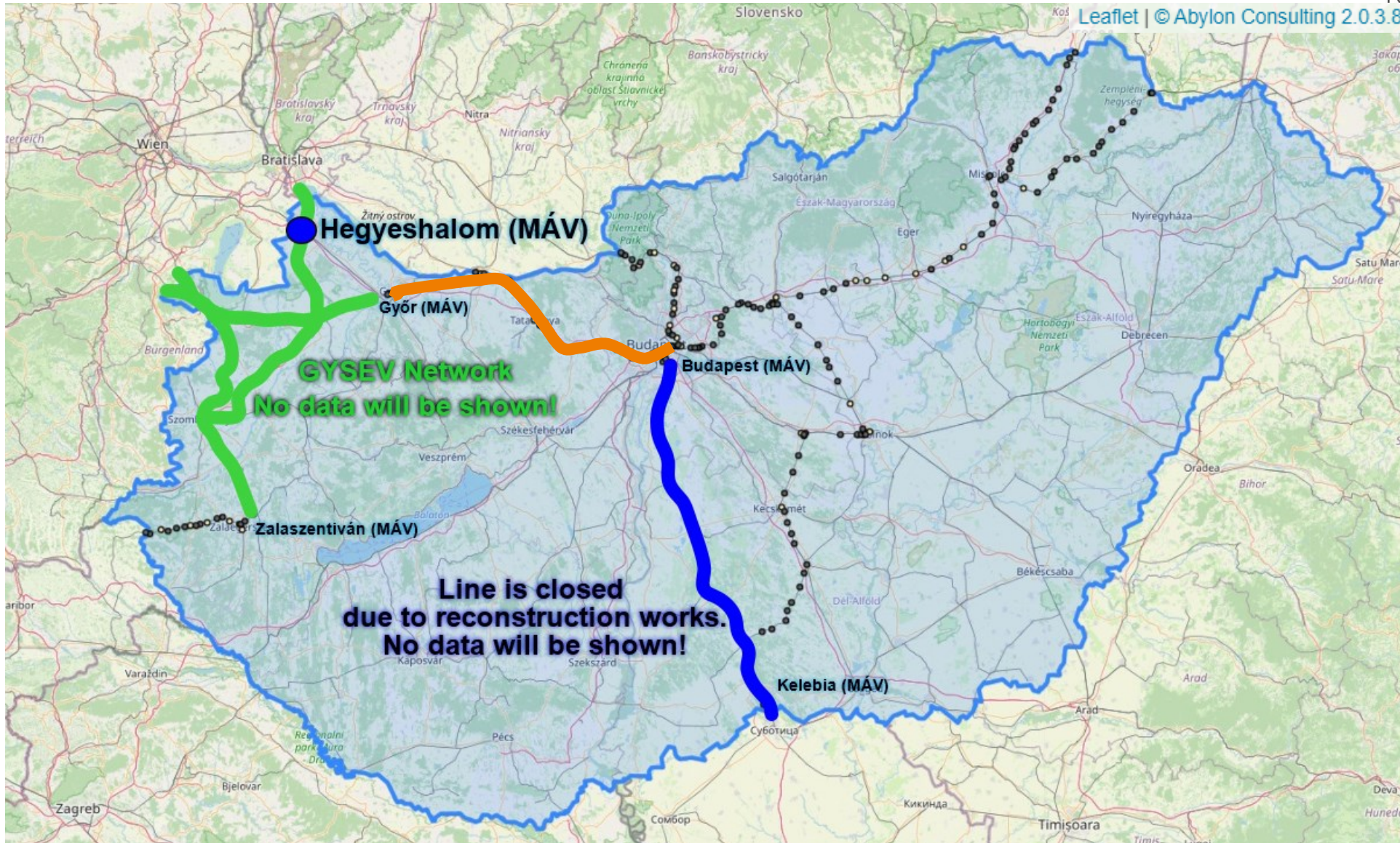


AMBER RAIL FREIGHT CORRIDOR

Analysis of Train Delay Causes

Szabolcs Tál | Train Performance Monitoring WG leader
TAG/RAG meeting | 23 May 2024 | Sopron

Hungarian Part of the RFC Amber Network



Key Facts

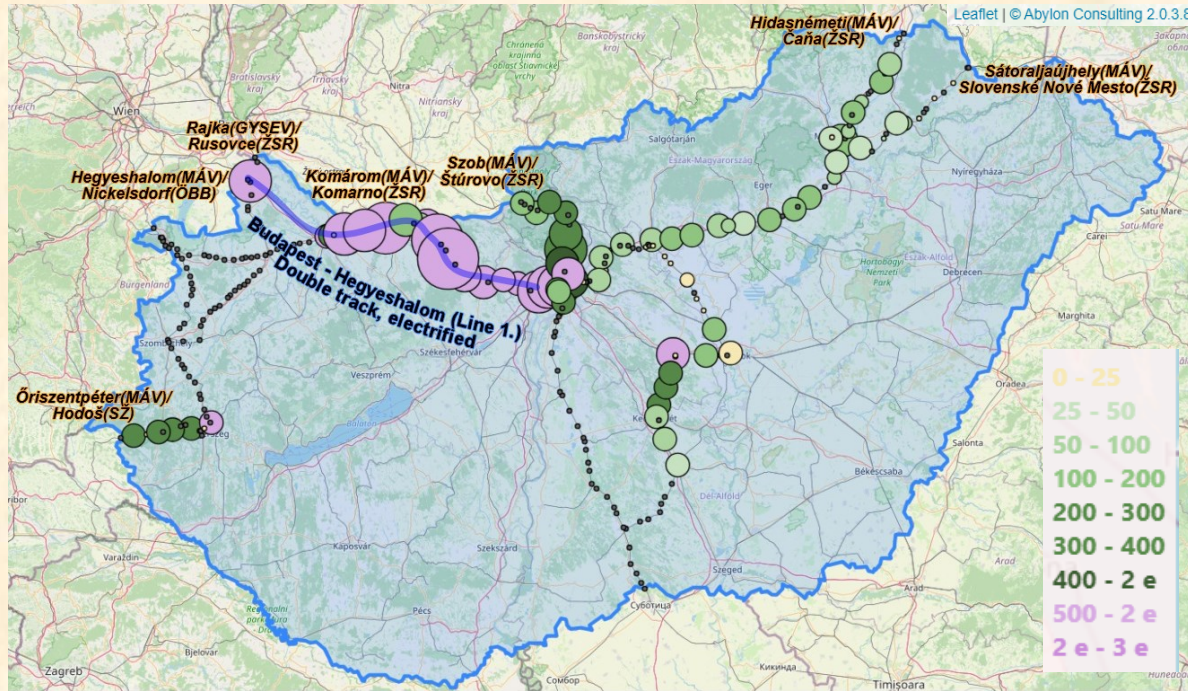
- The maps display data from the period between **01.05.2023. and 01.05.2024.**
- Every international freight train was taken into account that ran on the MÁV part of RFC Amber (the RFC train definition was ignored).
- The size of the circles on the maps is proportional to the amount of delays attributed to each location.
- The color of the circles on the maps depends on the number of affected trains.

In case an international freight train runs on an ad-hoc train path with a short-term timetable, the signallers are not required to record the causes of the delays.

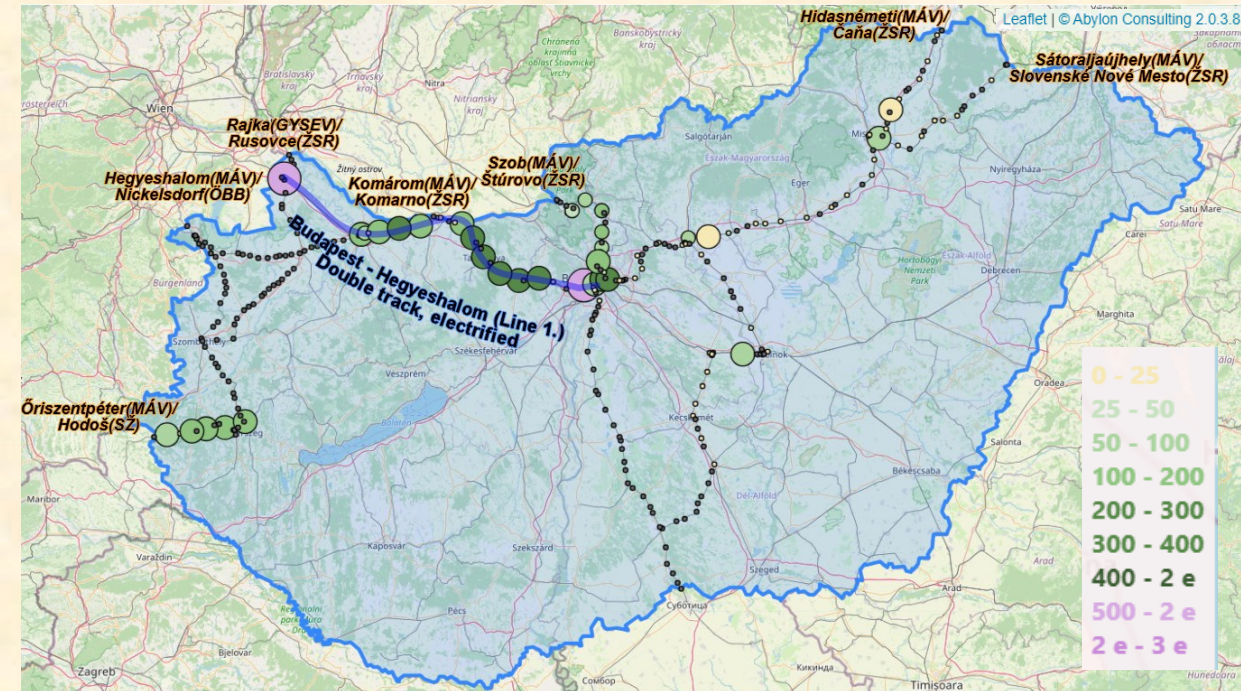


Secondary Delay Causes

91– Track occupation caused by the lateness of the same train



92–Track occupation caused by the lateness of another train



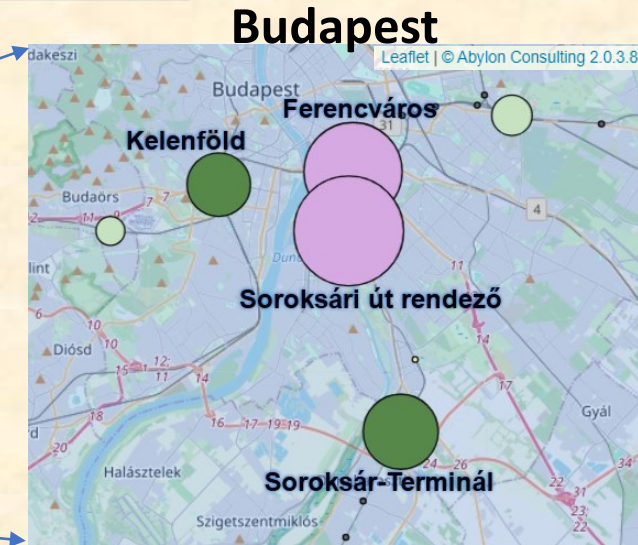
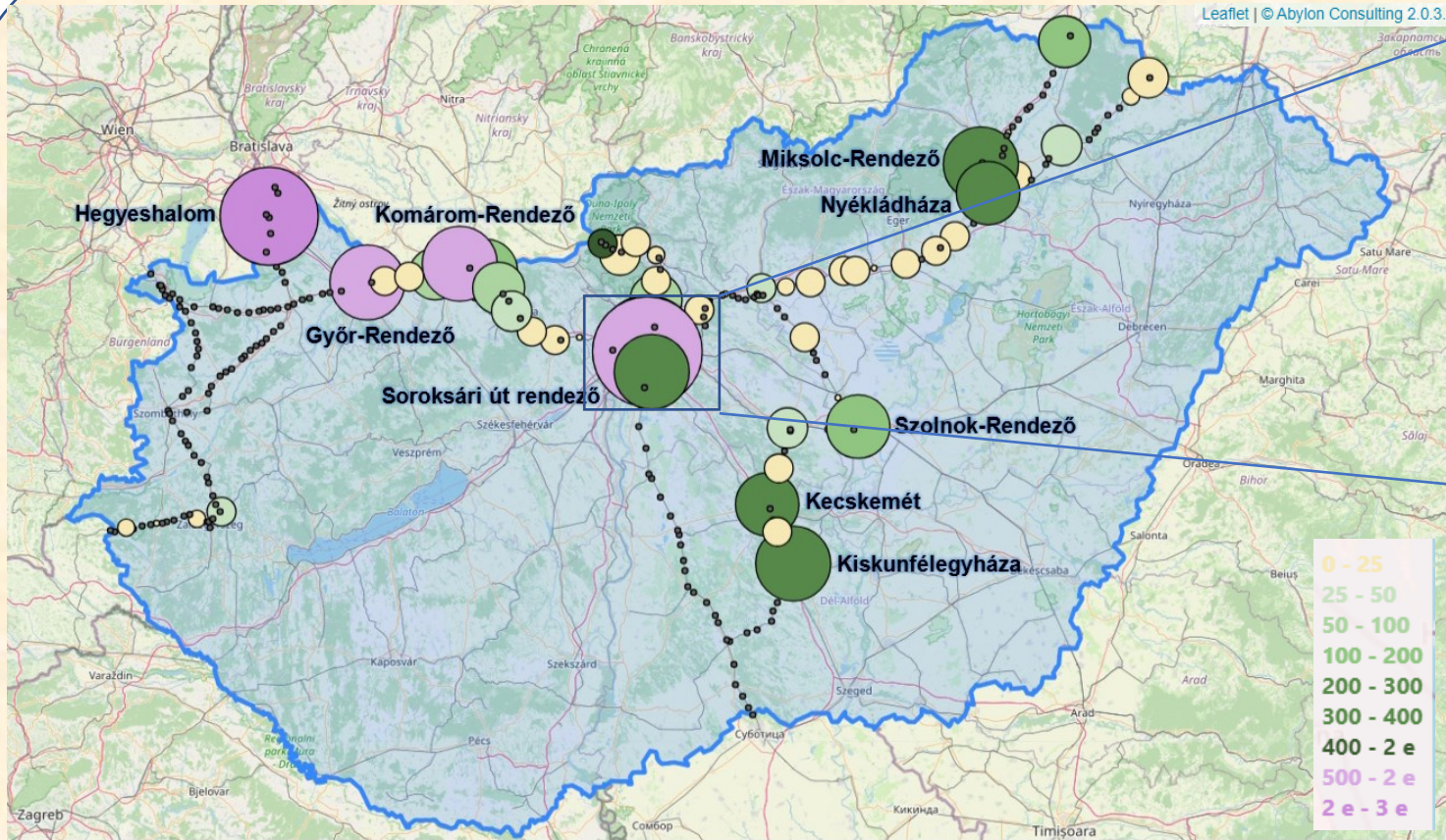
The international freight train that had to be stopped was:

already delayed ↔ running as scheduled

Can be used during planned reconstruction works!!!

RU-Related Delay Causes

54 - Commercial preparation of the train



Location	Affected trains	Delay (minutes)
Soroksári út rendező	1759	381 698
Ferencváros	1843	208 424
Hegyeshalom	2207	200 972
Komárom-Rendező	606	80 355
Soroksár-Terminál	310	78 089
Kiskunfélegyháza	280	77 889

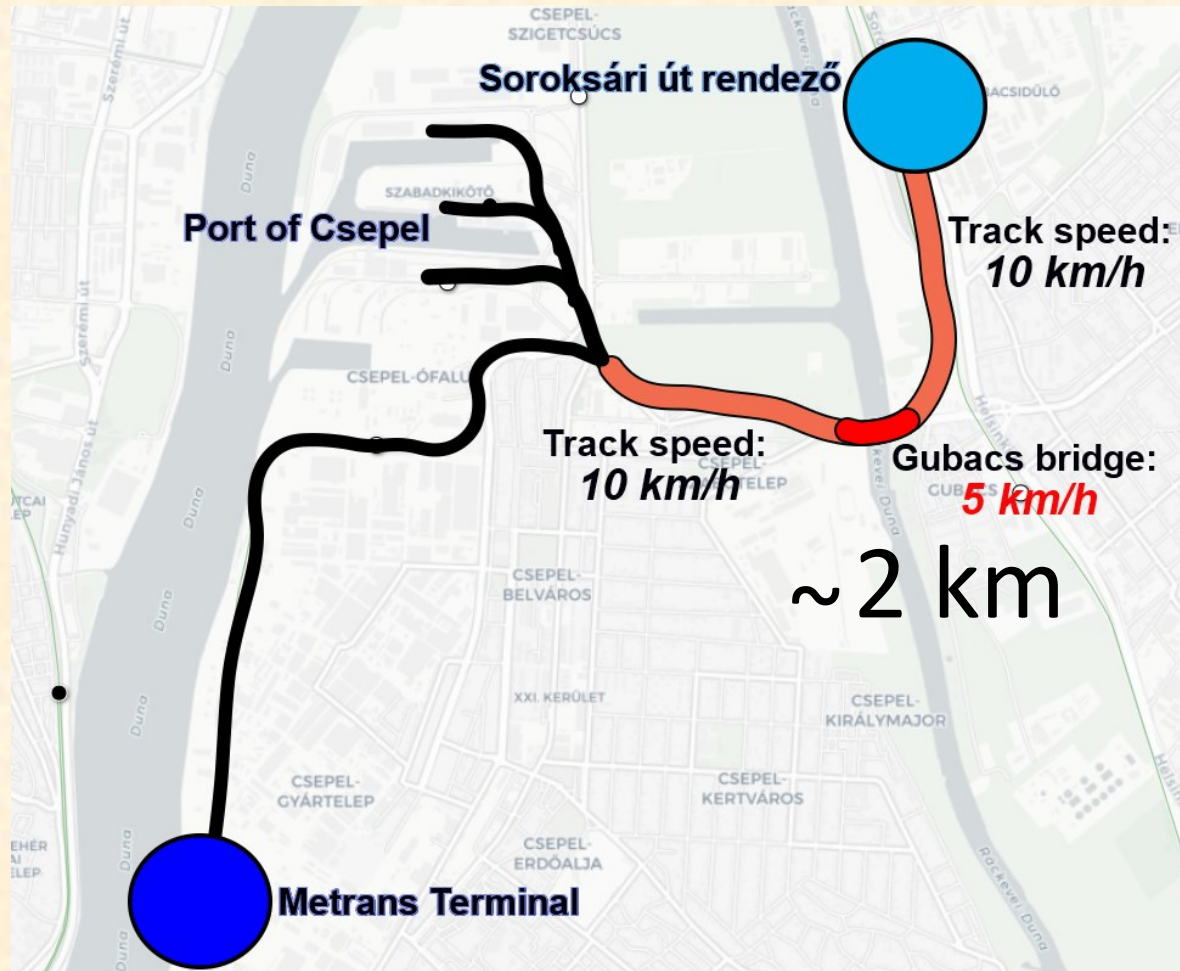
Location with the most affected trains: **Hegyeshalom** (2207)

Location with the highest amount of delay: **Soroksári út rendező** (381 698)



Soroksári út rendező (marshalling yard)

The circles represent only the locations, they don't symbolize anything else on this map!



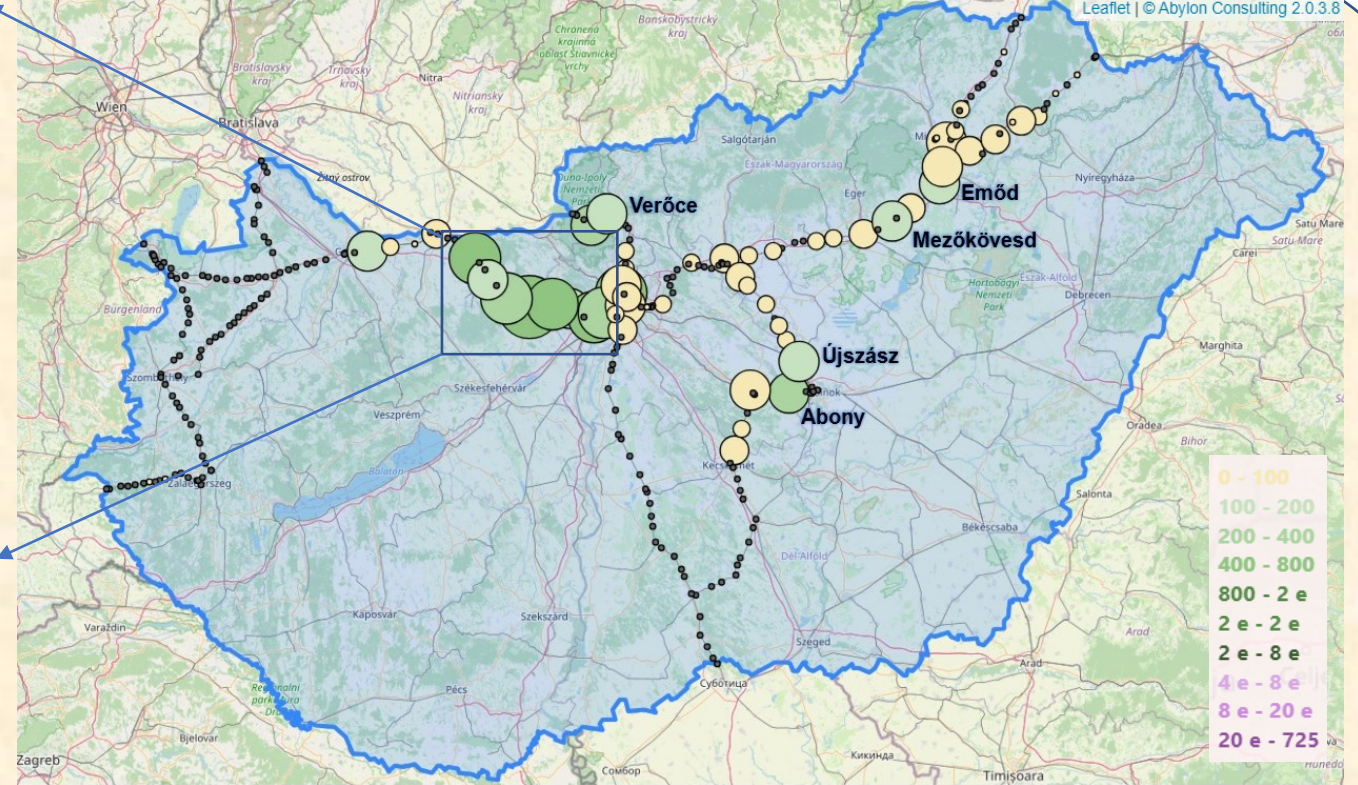
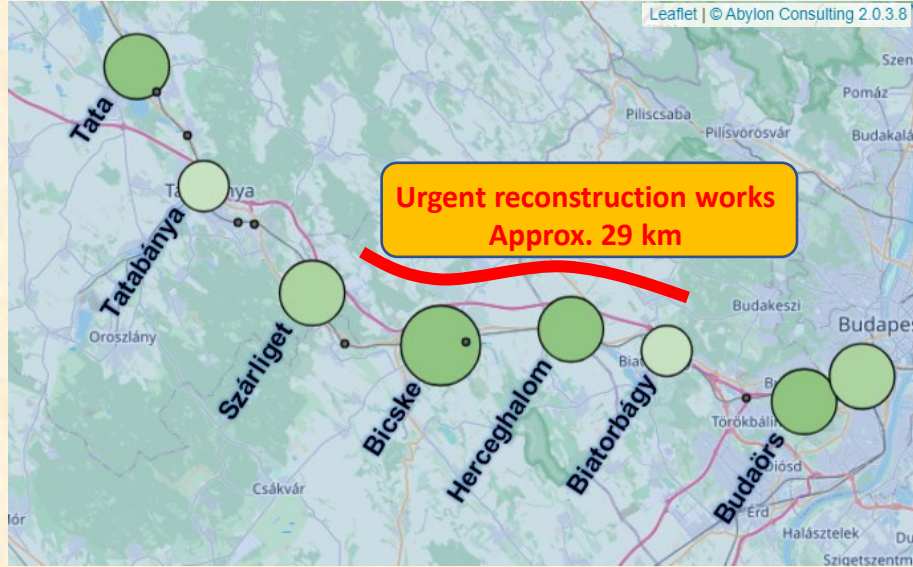
Base map source: RNE TIS



IM-Related Delay Causes

32 – Temporary speed restrictions

Part of the
Budapest-Hegyeshalom line



32 – Includes temporary speed restrictions:

- after reconstruction works
- to ensure the safety of the workers
- due to the deterioration of track conditions

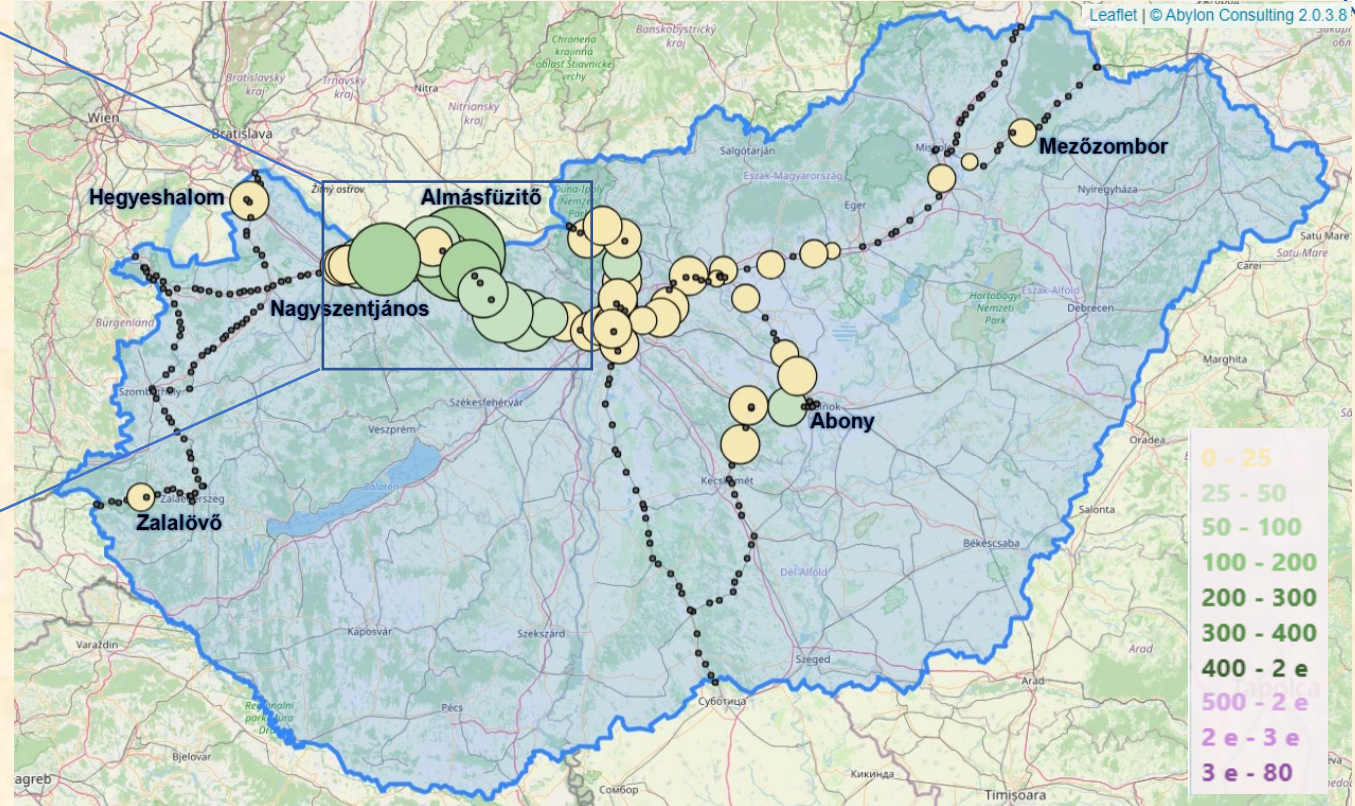
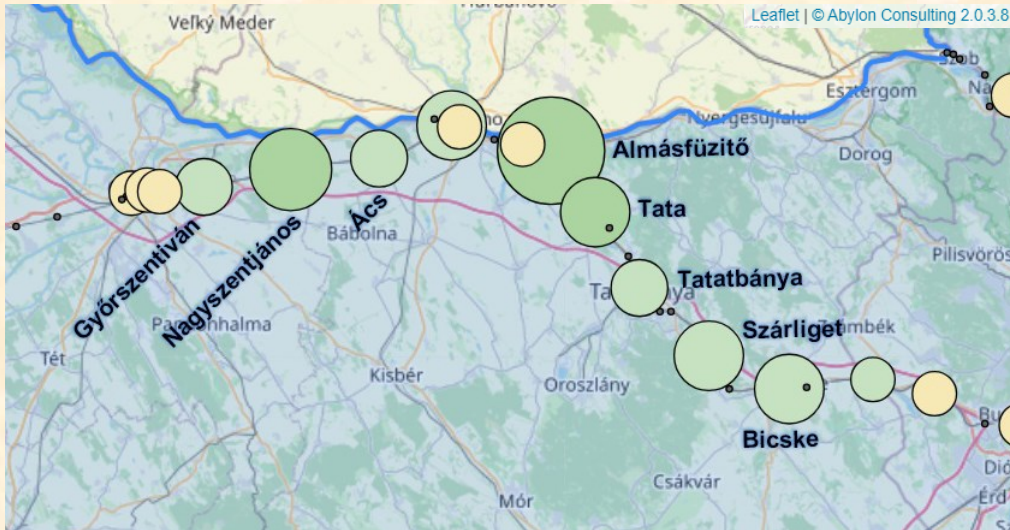
32 -- Temporary speed restriction excludes speed restrictions due to:

- bad weather conditions
- rail track fracture
- flood



IM-Related Delay Causes

20 – Signalling installations (All failures of signalling equipment)

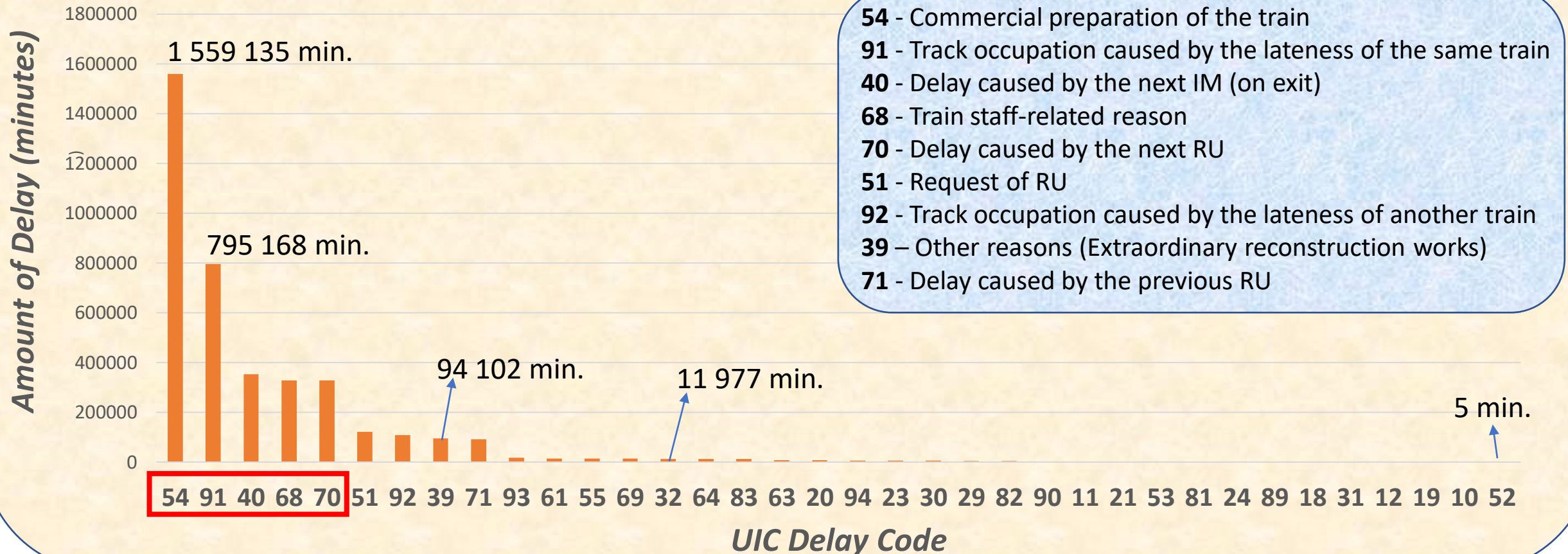


Location	Affected trains	Delay (minutes)
Almásfüzitő	80	1036
Nagyszentjános	74	646
Bicske	67	557
Tata	67	542
Szárliget	48	411



Bar Chart Overview of Delay Distribution

Total Amount of Delays by Cause Based on UIC Delay Codes (30.04.2023. – 30.04.2024.)



New TEN-T Regulation (not finalized)

Article 18

Operational priorities for the European Transport Corridors

1. *The Rail Freight governance shall make all possible efforts to ensure by 31 December 2030, that, on the European Transport Corridors, the quality of services provided to railway undertakings and technical and operational requirements for infrastructure use do not prevent the operational performance of rail freight services along the European Transport Corridors from meeting the following target values:*
 - (b) *at least 75% of the freight trains crossing at least one border along a European Transport Corridor arrive at their destination, or at the external Union border if their destination is outside the Union, at their scheduled time or with a delay of less than 30 minutes by reasons that are attributable to the infrastructure manager(s) of the Union. Delays occurred in and attributable to third countries that are crossed by freight trains shall not be taken into account.*

AMBER RAIL FREIGHT CORRIDOR

Thank you for your attention!

Szabolcs Tál | Train Performance Monitoring WG leader
TAG/RAG meeting | 23 May 2024 | Sopron



Co-financed by the European Union
Connecting Europe Facility

